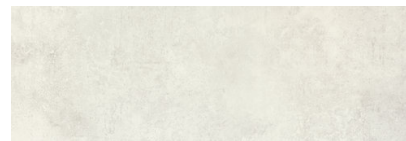


## TIMELESS WHITE RECT 30X90

REFERENCE	SIZE (cm)	THICKNESS (mm)	GROUP
<b>A027327</b>	30X90	10,30	REVESTI



### DIMENSIONS AND SURFACE PROPERTIES

Size, thickness, side straightness, flatness, orthogonality	UNE-EN 14411	It accomplished all requirements
---	--------------	----------------------------------

### PHYSICAL PROPERTIES

Water absorption capacity	EN ISO 10545-03	>10%
Flexion resistance	EN ISO 10545-04	=> 25 N/mm <sup>2</sup>
Abrasion resistance (glazed Ceramic)	EN ISO 10545-07	0.00
Thermal shock resistance	EN ISO 10545-09	It stands the test
Cracking resistance	EN ISO 10545-11	It stands the test
Frost resistance	EN ISO 10545-12	Not pass the test

### CHEMICAL PROPERTIES

Resistance to acids	EN ISO 10545-13	GLB
Resistance to alcalis	EN ISO 10545-13	GLB
Resistance to cleaning products	EN ISO 10545-13	GA
Resistance to chemical products in swimming pool water	EN ISO 10545-13	GA
Stains resistance	EN ISO 10545-14	5